

How to Separate and Put Out Household Waste

Sayama Encourages Recycling

Inquiries	●The Okutomi Environmental Center (Kamiokutomi 897-1)	☎ 04-2953-2831	☎ 04-2954-7718
	• Questions about waste collection or collection sites	☎ 04-2953-2831	☎ 04-2953-2832
	●Environmental Resources Promotion Section (at the City Office)		
	• Questions about recycling of food waste	☎ 04-2937-6943	

Separation and Collection Please take to collection sites, observing specified disposal methods, by 8:00 am on the collection day. Items improperly disposed cannot be collected.

- If the rain and wind is strong, or it is snowing, please put out your waste on the next collection day. (Depending on the weather, it may not be possible to collect.)
- Regular collection will continue on national holidays / substitute holidays. (Waste taken to centers cannot be accepted.)
- In order to eliminate collection difficulties, only garbage bags up to 45L are accepted.
- When bringing in waste, please make sure to separate it into the designated bags as outlined below.
- The city does not provide nor lend bird-proof nets for collection sites.
- No waste collection between December 28 (Sat.) and January 5 (Sun.) for the New Year. However, there will be an extra Burnable Waste collection day on December 30 (Mon.) for areas where Burnable Waste is collected on Mondays and Thursdays, and on December 31 (Tue.) for areas where Burnable Waste is collected on Tuesdays and Fridays.

Category	Used paper & cloth (Resource) Twice a month	Bottles & cans, used batteries, spray cans (Resource) Twice a month	PET bottles (Resource) Once a month	Plastics (Resource) Once a week	Unburnable waste Once a month	Burnable waste Twice a week	Bulky waste (For charge) Collection of telephone appointment
Waste	<p>Used paper... Bind crosswise with string. (Collection carried out regardless of rain or snow.)</p> <p>◆ Each category of items is collected. Please make sure to put items out before 8:00 am.</p> <ul style="list-style-type: none"> ○ Newspapers (Including handbills) ○ Cardboard boxes ○ Magazines/ Miscellaneous papers (Books, magazines, paper boxes, toilet paper tubes, etc.) ○ Paper cartons (Items marked with ♻️ such as milk cartons) <p>For miscellaneous papers, insert them between magazines or put them in paper bags and bind crosswise with string.</p> <p>Wash ⇒ Open ⇒ Dry Bind crosswise.</p>	<p>Bottles and Cans... Remove lids, wash inside, and put in one bag together.</p> <p>As for caps or lids, dispose of as either "Plastics" or "Unburnable waste," depending on the materials.</p> <p>◆ Items mainly containing foods</p> <ul style="list-style-type: none"> ○ For drinks (Juice, health drinks, etc.) ○ For food (Jam, cooking oil, candy tins, etc.) ○ For alcohol (Beer, etc.) ○ For pet foods ○ Glass bottles for cosmetics <p>Beginning in April 2024</p> <p>Spray cans... Place in a separate bag from bottles and cans.</p> <ul style="list-style-type: none"> ○ Aerosol cans of mousse, perfume and insecticide, etc. ○ Oil/Paint spray cans ○ Cooking gas canister <p>** Empty the contents and do not open a hole in the item.</p>	<p>Only for bottles with the mark shown on the right. Dispose of bottles without this mark in "Plastics."</p> <p>♻️ PET</p> <p>◆ Remove caps and labels and dispose of them as "Plastics." Wash the inside of bottles and crush them.</p> <ul style="list-style-type: none"> ○ For drinks (Juice, tea, etc.) ○ For alcohol (Shochu, cooking alcohol, etc.) ○ For soy sauce, mirin (Mirin (sweet cooking rice wine) flavor seasoning, vinegar, cooking vinegar, soy sauce processed seasoning (sauce for noodles, etc.) and non-oil dressing, etc.) <p>Remove caps and labels</p>	<p>For items with the mark on the right, or items made from only plastic even without the mark.</p> <p>♻️</p> <ul style="list-style-type: none"> ○ Cups, packages ○ Bin liners, plastic bags ○ Bottles, caps ○ Flower pots and planters (Remove the soil and dirt) ○ CDs, DVDs, Blu-ray discs, etc. ○ Trays (Take white trays to supermarkets or collecting spots when possible.) ○ Styrofoam (Fish containers or packaging materials, etc.) ○ Plastic buckets and plastic containers, etc. <p>* Empty any leftover contents and wipe soiled items with a rag, etc. or rinse them clean.</p> <p>Food containers made of soft materials from which it is difficult to remove leftover food should be disposed of as "Burnable waste."</p>	<p>◆ Dispose of items with one side over 30 cm as "Bulky waste."</p> <ul style="list-style-type: none"> ○ Metals, glass, chinaware ○ Aluminum foil ○ Cooking utensils (Pans, pots, frying pans, etc.) ○ Small home appliances except for the four types of home appliances <p>* Remove any batteries. Dispose of items with built-in batteries in a small home appliance collection box.</p> <ul style="list-style-type: none"> ○ Bags, shoes, rubber boots ○ Oil/Paint cans (except for spray cans) * Empty all contents. ○ Lighters, and thermometers and sphygmomanometers for measuring blood pressure containing mercury, etc. <p>* For lighters, put just the lighters inside a bag, and for mercurial thermometers or thermometers, put them in the paper box the new one came in, etc. and then put it in a bag. Place these bags next to "Unburnable waste."</p>	<ul style="list-style-type: none"> ○ Food waste (Drain well.) (Food waste recycling program ⇒ See reverse side) ○ Paper diapers (remove excreta) ○ Cooking oil (Permeate with paper/cloth) ○ Containers used for home medical care (Syringes / Injection needles cannot be disposed of with waste. Please consult medical institutions or stores.) ○ Other <p>Desiccant, disposable body warmers, underwear, cold insulators, enemas, etc.</p> <p>* Bundle the following items according to the rules mentioned below:</p> <ul style="list-style-type: none"> Dead leaves (Up to two 45L bags) Branches, pieces of wood (Less than 5 cm thick, less than 1 m long, up to 2 small bundles by strings) Pieces of board in small quantities (Less than 1 cm thick, 30 cm wide, and 30 cm long) <p>* Please bring large quantities of waste or items not mentioned above to the Environmental Center.</p>	<p>Direct line for appointment (at the Okutomi Environmental Center) ☎ 04-2953-2832</p> <p>Hours 8:30am-3:30pm Closed on Saturdays, Sundays, and National holidays.</p> <p>Electronic application "E-application" on the Sayama City official website * You must register as a user to complete procedures.</p> <ul style="list-style-type: none"> ○ Household items such as furniture and appliances you no longer need, which are larger than 30 cm, can be collected for a fee, but some items cannot be collected. * Example: Four types of home appliances (televisions, air conditioners, washing machines and dryers, refrigerators and freezers), computers, and construction material waste. <p>☆ Application and disposal method ☆</p> <ul style="list-style-type: none"> ○ Up to 5 items per time. ○ Collections are from Monday to Friday. (Excluding national holidays, etc.) ○ We may be unable to collect on certain days due to scheduling. ○ Please put out bulky waste at street level on collection day. ○ Place a note with the "receipt number" on each item. We might not collect waste without a note as we can't decide whether it should be collected or not. ○ Fees are collected at the same time. ○ You can make next appointment once your payment has been made. <p>As with spring mattresses, you will need to pay a ¥1,000 disposal fee per item as well as the fee stated above.</p>
	Disposal method	<p>○ For used paper, divide by items of newspapers, cardboard boxes, magazines/ miscellaneous papers, and paper containers, and bind crosswise with strings.</p> <p>○ Old clothes can be used as they are. Wash them. You don't have to get rid of buttons or zip fasteners.</p> <p>Please give priority to area group collections.</p>	<p>○ Place spray cans in a separate bag from bottles and cans.</p> <p>○ Make sure to remove all caps and lids of bottles and cans.</p> <p>○ Wash the inside with water. (Except for spray cans)</p> <p>○ Put them in a transparent and colorless bag in order to see the contents.</p>	<p>○ Take off caps and labels, wash the inside of bottles, and crush them.</p>	<p>○ Use large bags (45L or so) due to the risk of blowing around in the wind.</p> <p>○ Use up all contents, and wash or wipe the dirty items with paper or cloth.</p> <p>○ You don't have to peel off stickers.</p>	<p>○ Dispose of items with one side over 30 cm as "Bulky waste."</p> <p>○ Wrap cracked glass and cutlery with newspapers, etc. and label the contents clearly.</p> <p>○ Put mercurial thermometers, thermometers, or lighters in bag and place next to "Unburnable waste."</p> <p>○ Do not bundle fluorescent light tubes with packing tape or similar things.</p>	<p>○ For food waste, drain them well.</p> <p>○ For weeds and other plants, remove the soil from the roots.</p>
Bags	Transparent and colorless (Only used cloth)	Transparent and colorless	Transparent and colorless	Transparent and colorless	Transparent and colorless	White and translucent, transparent and colorless	

* Please see reverse side as for bringing carried-in waste.

* Please aim for food loss reduction to reduce amounts of burnable waste.

(Made from recycled paper)

Area name	Burnable waste	Plastics	Category	April	May	June	July	August	September	October	November	December	January	February	March
-----------	----------------	----------	----------	-------	-----	------	------	--------	-----------	---------	----------	----------	---------	----------	-------

Find the area in which your waste collection site is located and confirm its collection schedule on the chart. Then, cut out your area from the list and paste it here.

* You can easily check the collection schedule from your smartphone using the Waste Separation App.



Information service for smartphones
Waste Separation App
(Japanese version only)

- Collection Schedule
- Notification Settings
- Household Waste Separation Guide
- Disposal Method



▲ For iOS

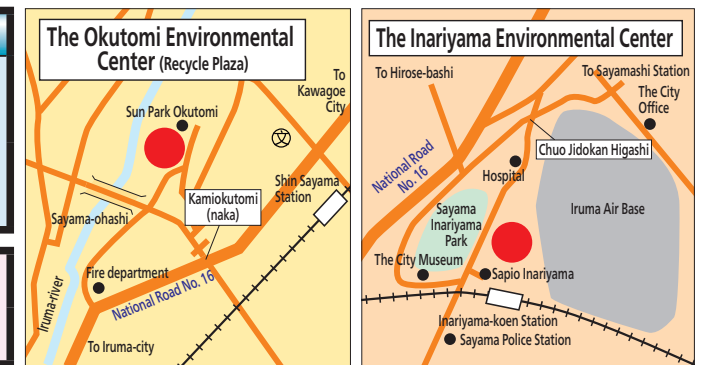


▲ For Android

About bringing in waste

- Please sort waste as per the "How to Separate and Put Out Household Waste," and bring it in the designated bags and methods. Additionally, per-rules, waste is to be brought in by the owner or a member of their household or family.
- Waste from outside Sayama City is not accepted.** (In order to confirm your address, you may be required to show your driver's license.) (Please use the designated passageway to the Okutomi Environmental Center.)

Name of facility	Waste that can be taken directly to the center (We don't accept waste which is not separated.)	Hours	Charges (Handling Fees)
The Okutomi Environmental Center <i>(Crushing/Recycling Facilities)</i> Kamiokutomi 897-1 ☎ 04-2953-2831 ☎ 04-2954-7718	Unburnable waste, bulky waste, bottles and cans, used batteries, fluorescent, tube, etc.	(For both Centers) Burnable waste, used papers, used cloths, PET bottles, plastics, gardening garbage. It is advisable to bring in "a large quantity of burnable waste" and "burnable waste only" to Inariyama Environmental Center if possible.	● Domestic waste...90 yen per 10 kg. Free under 50 kg * As for waste weighing 50 kg and more, we charge for the total weight of the carried-in waste, not only for the excess weight. For spring mattresses, you will need to pay a ¥1,000 disposal fee per item in addition to the fee stated above. ● Business waste...240 yen per 10 kg * Industrial waste is not accepted.
The Inariyama Environmental Center <i>(Incineration Facilities)</i> Inariyama 1-12-1 ☎ 04-2954-9062 ☎ 04-2968-0780	Burnable waste, futons and carpet [rug], etc., business burnable	Weekdays 8:30 am–11:30 am, 1:00 pm–3:30 pm Saturdays 8:30 am–11:30 am (Calls on Sundays, National holidays, and Substitute holidays will not be accepted.) Closed at year-end and new-year [from 29th of Dec. (Sun.) to 3rd of Jan. (Fri.)]	



Recycle Plaza (at the Okutomi Environmental Center) Kamiokutomi 897-1	Display Corner ☎ 04-2968-1323	<ul style="list-style-type: none"> We will accept items that are no longer needed (household items which are usable) for free, and sell them. Recycled items (furniture, etc. which are recyclable in bulky waste) will be distributed by lot with a fee. 	Opening Hours: Weekdays 9 am–3:30 pm, Saturdays 9 am–11:30 am Closed on Sundays, National holidays, Substitute holidays, and at year-end and new-year [from 29th of Dec. (Sun.) to 3rd of Jan. (Fri.)]
------------------------------------------------------------------------------------	-----------------------------------------	-----------------------------------------------------------------------------------------------------------------------------------------------------------------------------------------------------------------------------------------------------------------------------------	------------------------------------------------------------------------------------------------------------------------------------------------------------------------------------------------------------------

Disposal of small animal carcasses

- Regarding the bodies of small animals (dogs, cats, etc.), please contact the Okutomi Environmental Center, or bring them to the Inariyama Environmental Center or the Okutomi Environmental Center.
- Please see above about bringing-in hours. Alternatively, we can come to collect them in the afternoon.
- * A handling fee required: 500 yen per body for bringing in, 1,000 yen per body for collection.**
- * Small animals of less than 1 m long and weighting less than 30 kg are accepted.**
- * Bones cannot be returned.**

Computer (PC) recycling


- According to the Law for Promotion of Effective Utilization of Resources (PC recycling law), all manufacturers are required to recycle their products.
- Please refer to your PCs manufacturer for details on how to recycle your PC.
- If there is no manufacturer because it went out of business or withdrew from Japan, or if the items were personal imports or DIY computers, etc., please contact Renet Japan (<http://www.renet.jp/>), a company designated by Sayama City to comply with the Small Home Appliance Recycling Law. <Renet Customer Centers> ☎0570-085-800 * Calls cost 10 yen per 20 seconds 10:00 am–5:00 pm

Food waste recycling program

- A program is implemented in which household food waste is collected once a week and recycled to make organic fertilizer. (Applications accepted per household)
- Per-request we hold information sessions.
- Those who wish to participate should contact the Environmental Resources Promotion Section after purchasing the designated bucket.
- Please purchase the designated bucket from one of the stores listed below.

Small home appliance recycling

- Resources such as gold, copper, and rare metals are effectively utilized by picking up home appliances from unburnable waste brought to the Okutomi Environmental Center, and the small home appliances collection boxes.
- These collection boxes, with a slot of 25 cm x 10 cm, are installed in the city hall, community center, Recycle Plaza, and civic center.**
- * Four types of home appliances (televisions, air conditioners, washing machines, clothes dryers, refrigerators, etc.) and PCs cannot be accepted.



- JA Farmers Iruma
- Masakiya (Kashiwabara)
- Sayama City Recycle Plaza

Compost from recycling is given away for free at events such as environmental panel exhibitions.

Purchase expense subsidy
 A designated bucket is ¥2,900.
 * Subsidy is ¥1,700. (3/5 of purchase expense)
 * Please fill in the required information in the subsidy application found in the designated bucket and apply. (Submit to: Environmental Resources Promotion Section or regional centers.)

Collection days

Monday: Okutomi, Kashiwabara, Mizutomi areas
 Tuesday: Irumagawa area
 Wednesday: Horigane, Shinsayama, Sayamadai areas
 Friday: Iriso area

*** A subsidy system for installing a food waste disposer**

(1) Purchase expense subsidy for a food waste composter (3/5 of purchase expense, up to ¥4,000)
 (2) Purchase expense subsidy for an electric food waste disposer (A subsidy is 1/2 of a purchase expense, up to ¥10,000)

Environmental Resources Promotion Section
 ☎04-2937-6943

Recycling of the four types of home appliances (TVs, air-conditioners, washing machines/clothes dryers, and refrigerators/freezers)

- The four types of home appliances (televisions, air conditioners, washing machines/clothes dryers, and refrigerators/freezers) are not collected or accepted in the city in accordance with the Home Appliance Recycling Law.
- If you want to dispose of the home appliances above, please ask the appliance retailer where you bought them from to come and collect. A collection/transport fee and a recycling fee will be charged.
- Collection/transport fee.....This is not a standard charge. Please ask the retailer.
- Recycle fees**
 The fee varies depending on the manufacture and product. Please call the Home Appliance Recycling Ticket Center (☎ 0120-319640) for details.
 You can also consult the Home Appliance Recycling Ticket Center website (<http://www.rkc.aeha.or.jp/index.html>).
- If you do not know from which retailer the appliance was purchased, consult with the nearest home appliance retailer or general waste management service which handles the four types of appliances (for a fee).
- When bringing waste in to the collection sites below, please pay the recycling fee listed above (separate transfer fee required) at your local post office, pick up the recycle ticket and post office issued Transfer Payment Certificate (receipt), and then give it to the collection workers. **When bringing items in, no prior notice is required.**

Specified collection sites
Nippon Express Co., Ltd., Kawagoe Business Office 6-37-3, Minami-Otsuka, Kawagoe City
NAGAO Corporation, Recycling Center 200-1 Shingo, Tokorozawa City
Tojo Express Co., Ltd., Kawagoe Recycling Center 886-9, Matsugo, Kawagoe City
Aoi Environmental Development Iruma Eco Stock 763-1, Bushi, Iruma City
Kurume Transportation Co. Ltd., Iruma Branch 1278-7, Nihongi, Iruma City

Environmental Resources Promotion Section
 ☎04-2937-6943

Please contact the Okutomi Environmental Center if you notice anyone taking recyclables from collection sites:

- Where and when it took place
- License plate number, type of car, color
- What types of recyclables were taken (Newspapers, cardboard, etc.)

Disposal Method Example (Collecting methods may differ according to material, amount and size of the waste, so please feel free to contact us if you have any questions.)

* Please refer to the Household Waste Separation Guide or Waste Separation App on the Sayama City homepage (<http://www.city.sayama.saitama.jp/>) for any items not listed here.

Items	Category	Application	Items	Category	Application
A Activated carbon	Burnable waste	A little amount and used inside of refrigerators, etc.	H Hair spray cans	Bottles & cans, used batteries	Empty the contents and place the item in a separate bag from bottles and cans, without opening a hole in it.
A Aquariums	Bulky waste	Make an appointment by phone or bring in.	L Lawn mowers (hand-push type)	Bulky waste	Make an appointment by phone or bring in. We will not accept items with an engine because they are difficult to process.
B Bicycles	Bulky waste	Make an appointment by phone or bring in (including electric bicycles).	LED bulbs, LED lamps (round type/linear type)	Unburnable waste	Put in the box that the new one came in, or in a separate bag, and place next to unburnable waste.
B Blue tarps	Bulky waste	Make an appointment by phone or bring in. Treated as plastic when clean and cut into 30 cm pieces with metal removed. Dispose of dirty items as burnable waste.	Legless chairs/low tables	Bulky waste	Make an appointment by phone or bring in.
B Bottles for cosmetics	Bottles & cans, used batteries	Dispose of items made with plastic as plastic, after removing any mess.	Lighters	Unburnable waste	Put in a bag, and place next to unburnable waste.
C Cabinets	Bulky waste	Make an appointment by phone or bring in.	M Microwave ovens	Bulky waste	Make an appointment by phone or bring in.
C Cassette cylinder	Bottles & cans, used batteries	Empty the contents and place the item in a separate bag from bottles and cans, without opening a hole in it.	M Mirrors	Unburnable waste	Dispose of items bigger than 30 cm as bulky waste.
C Cassette tapes	Unburnable waste	Up to 10 at a time. Bring them in if more.	O Oil (for food)	Burnable waste	Soak it into a cloth or newspaper.
C Cellular phones	Consult with the store.	When disposing at collection sites, remove the battery and dispose of the item as unburnable waste. Dispose of the battery as bottles, cans, used batteries. You can also use the small home appliance collection box.	P Paint cans (except for spray cans)	Unburnable waste	Empty the contents.
C Chinaware	Unburnable waste	Dispose of items bigger than 30 cm as bulky waste.	P Paint spray cans	Bottles & cans, used batteries	Empty the contents and place the item in a separate bag from bottles and cans, without opening a hole in it.
C Cold insulators	Burnable waste	If the outside is made of hard plastic, dispose of as unburnable waste.	P Pillows	Burnable waste	Cut into portions less than 30 cm.
C Cooler boxes	Bulky waste	Make an appointment by phone or bring in.	P Plant pots (ceramic)	Unburnable waste	Bulky waste for the items bigger than 30 cm. Plastic for the items which are made with plastic.
C Curtains	Used paper & cloth	Remove any hooks. Cut dirty or torn items into pieces 30 cm or smaller and dispose of them as burnable waste.	P Portable battery charger	Bottles & cans, used batteries	Place in a separate bag from bottles and cans.
C Cutlery/knives	Unburnable waste	Wrap the blade part in newspaper or something for safety.	P Pots (electric pots)	Unburnable waste	Dispose of items bigger than 30 cm as bulky waste.
D Diapers/paper diapers	Burnable waste	Dispose of excreta in a toilet.	P Printers	Bulky waste	Make an appointment by phone or bring in. Remove the ink tank and toner box.
D Disposal body warmer	Burnable waste	Soak them in water if the item has not been used.	R Rice cookers	Bulky waste	Make an appointment by phone or bring in. Dispose of items smaller than 30 cm squared as unburnable waste.
D Dumbbells	Bulky waste	Make an appointment by phone or bring in.	S Sandbox for pets	Burnable waste	
E 18-liter cans	Unburnable waste	Empty contents, crush	S Sitting cushions	Bulky waste	Make an appointment by phone or bring in. Dispose of items which are cut into shorter than 30 cm as burnable waste.
E Electric blankets/heated carpets	Bulky waste	Make an appointment by phone or bring in.	S Smartphones/tablets	Unburnable waste	Items marked with the PC recycle mark are treated in the same manner as computers. Remove the battery and dispose of the item as unburnable waste. Items with an integrated battery that cannot be removed should be placed in the small home appliance collection box.
E Electronic cigarettes	Bottles & cans, used batteries	Place in a separate bag from bottles and cans.	S Space heaters (oil)	Bulky waste	Make an appointment by phone or bring in. Take fuel out and remove batteries.
F Fan heaters	Bulky waste	Make an appointment by phone or bring in. Take fuel out.	S Stereo set	Bulky waste	Make an appointment by phone or bring in.
F Fans	Bulky waste	Make an appointment by phone or bring in.	S Stuffed animals	Burnable waste	Dispose of items bigger than 30 cm as bulky waste.
F Fireworks	Burnable waste	Wet them.	S Styrofoam	Plastics	As for dirty items, cut into less than 30 cm and dispose of as unburnable waste.
F Frying pans	Unburnable waste	Items within 30 cm excluding the handle are accepted if they can fit into a 45-liter bag tied closed at the top.	T Toaster ovens/combination microwave ovens	Bulky waste	Make an appointment by phone or bring in. Dispose of items smaller than 30 cm squared as unburnable waste.
F Furniture	Bulky waste	Make an appointment by phone or bring in.	U Umbrellas	Unburnable waste	Bundle them and place next to unburnable waste.
F Futons	Bulky waste	Make an appointment by phone or bring in.	V Vacuum cleaners	Bulky waste	Make an appointment by phone or bring in.
G Golf clubs	Bulky waste	Make an appointment by phone or bring in.	V Video tapes	Unburnable waste	Up to 10 at a time. Bring them in if more.
G Grass	Burnable waste	Up to two bags at a time. Bring them in if more.			

Examples of items that cannot be collected or processed

Items	Application	Items	Application
A Air conditioner	Refer to recycling of four types of home appliances (lefthand side).	R Refrigerators/freezers	Refer to recycling of four types of home appliances (lefthand side).
B Batteries (for cars and motorcycles)	Because they are difficult to process.	R Roof tiles, slate, etc.	Because they are construction material waste.
B Blocks	Because they are construction material waste.	S Safe/safety box (fire resistant)	Because it is difficult to process.
B Bricks	Because they are construction material waste.	S Solar-powered water heaters	Because they are difficult to process.
C Cement	Because it is difficult to process.	S Stones/soil/sand (gravel)	Because it is a natural object (not waste). Consult with the store of purchase, a landscape contractor, or an industrial waste disposal company.
D Displays (for PC use)	Refer to computer (PC) recycling (lefthand side).	S Syringes/injection needles	Consult medical institutions or stores.
E Engines	Because they are difficult to process.	T Televisions (cathode-ray tube, LCD, etc.)	Refer to recycling of four types of home appliances (lefthand side).
F Farming machines/appliances	Because they are difficult to process.	T Tiles	Because they are construction material waste.
G Gas refills	Because they are difficult to process.	T Tires (cars and motorbikes)	Because they are difficult to process.
M Motorbikes (including parts, etc.)	Because they are difficult to process. Use the recycling system for motorbikes.	W Wallpaper	Because it is difficult to process.
P Paints	Because they are difficult to process. For a little amount, soak it into cloth or newspaper and dispose of as burnable waste.	W Washing machines	Refer to recycling of four types of home appliances (lefthand side).
PCs	Refer to computer (PC) recycling (lefthand side).		
Pianos	Because they are difficult to process.		

2024 Household Waste Collection Schedule

Burnable waste **Mon./Thu.** area Cut out your area from the list and paste above.

* For the calendar version of the collection schedule, please search for "2024 Household Waste and Recycling Waste Collection Calendar Sayama City" on the internet and select the calendar from Sayama City's official website.
* Nonbusiness days are indicated in red.

Area name	Burnable waste	Plastics	Category	April	May	June	July	August	September	October	November	December	January	February	March
Irumagawa 1, 4-chome Inariyama 1, 2-chome,	Every Mon./Thu. <small>Dec. 30 (Mon.) Last collection day of the year, closed on Jan. 2 (Thu.)</small>	Every Tuesday <small>Dec. 24 (Tue.) Last collection day of the year, closed on Dec. 31 (Tue.)</small>	Used paper & cloth	12 · 26	10 · 24	14 · 28	12 · 26	9 · 23	13 · 27	11 · 25	8 · 22	13 · 27	17 · 31	14 · 28	14 · 28
			Bottles & cans, used batteries	5 · 19	3 · 17	7 · 21	5 · 19	2 · 16	6 · 20	4 · 18	1 · 15	6 · 20	10 · 24	7 · 21	7 · 21
			PET bottles	17	15	19	17	21	18	16	20	18	22	19	19
			Unburnable waste	3	1	5	3	7	4	2	6	4 · 18	8	5	5
Gion/Irumagawa Chuo	Every Mon./Thu. <small>Dec. 30 (Mon.) Last collection day of the year, closed on Jan. 2 (Thu.)</small>	Every Friday <small>Dec. 27 (Fri.) Last collection day of the year, closed on Jan. 3 (Fri.)</small>	Used paper & cloth	9 · 23	14 · 28	11 · 25	9 · 23	13 · 27	10 · 24	8 · 22	12 · 26	10 · 24	14 · 28	11 · 25	11 · 25
			Bottles & cans, used batteries	2 · 16	7 · 21	4 · 18	2 · 16	6 · 20	3 · 17	1 · 15	5 · 19	3 · 17	7 · 21	4 · 18	4 · 18
			PET bottles	17	15	19	17	21	18	16	20	18	22	19	19
			Unburnable waste	3	1	5	3	7	4	2	6	4 · 18	8	5	5
Kita-iriso (1-1442)	Every Mon./Thu. <small>Dec. 30 (Mon.) Last collection day of the year, closed on Jan. 2 (Thu.)</small>	Every Tuesday <small>Dec. 24 (Tue.) Last collection day of the year, closed on Dec. 31 (Tue.)</small>	Used paper & cloth	12 · 26	10 · 24	14 · 28	12 · 26	9 · 23	13 · 27	11 · 25	8 · 22	13 · 27	17 · 31	14 · 28	14 · 28
			Bottles & cans, used batteries	10 · 24	8 · 22	12 · 26	10 · 24	14 · 28	11 · 25	9 · 23	13 · 27	11 · 25	15 · 29	12 · 26	12 · 26
			PET bottles	17	15	19	17	21	18	16	20	18	22	19	19
			Unburnable waste	3	1	5	3	7	4	2	6	4 · 18	8	5	5
Minami-iriso (1-1020)	Every Mon./Thu. <small>Dec. 30 (Mon.) Last collection day of the year, closed on Jan. 2 (Thu.)</small>	Every Tuesday <small>Dec. 24 (Tue.) Last collection day of the year, closed on Dec. 31 (Tue.)</small>	Used paper & cloth	12 · 26	10 · 24	14 · 28	12 · 26	9 · 23	13 · 27	11 · 25	8 · 22	13 · 27	17 · 31	14 · 28	14 · 28
			Bottles & cans, used batteries	5 · 19	3 · 17	7 · 21	5 · 19	2 · 16	6 · 20	4 · 18	1 · 15	6 · 20	10 · 24	7 · 21	7 · 21
			PET bottles	17	15	19	17	21	18	16	20	18	22	19	19
			Unburnable waste	3	1	5	3	7	4	2	6	4 · 18	8	5	5
Fujimi 1, 2-chome Irumagawa 2-chome	Every Mon./Thu. <small>Dec. 30 (Mon.) Last collection day of the year, closed on Jan. 2 (Thu.)</small>	Every Friday <small>Dec. 27 (Fri.) Last collection day of the year, closed on Jan. 3 (Fri.)</small>	Used paper & cloth	2 · 16	7 · 21	4 · 18	2 · 16	6 · 20	3 · 17	1 · 15	5 · 19	3 · 17	7 · 21	4 · 18	4 · 18
			Bottles & cans, used batteries	9 · 23	14 · 28	11 · 25	9 · 23	13 · 27	10 · 24	8 · 22	12 · 26	10 · 24	14 · 28	11 · 25	11 · 25
			PET bottles	3	1	5	3	7	4	2	6	4	8	5	5
			Unburnable waste	17	15	19	17	21	18	16	20	4 · 18	22	19	19
Sayamadai 3, 4-chome	Every Mon./Thu. <small>Dec. 30 (Mon.) Last collection day of the year, closed on Jan. 2 (Thu.)</small>	Every Friday <small>Dec. 27 (Fri.) Last collection day of the year, closed on Jan. 3 (Fri.)</small>	Used paper & cloth	2 · 16	7 · 21	4 · 18	2 · 16	6 · 20	3 · 17	1 · 15	5 · 19	3 · 17	7 · 21	4 · 18	4 · 18
			Bottles & cans, used batteries	10 · 24	8 · 22	12 · 26	10 · 24	14 · 28	11 · 25	9 · 23	13 · 27	11 · 25	15 · 29	12 · 26	12 · 26
			PET bottles	3	1	5	3	7	4	2	6	4	8	5	5
			Unburnable waste	17	15	19	17	21	18	16	20	4 · 18	22	19	19
Mizuno	Every Mon./Thu. <small>Dec. 30 (Mon.) Last collection day of the year, closed on Jan. 2 (Thu.)</small>	Every Tuesday <small>Dec. 24 (Tue.) Last collection day of the year, closed on Dec. 31 (Tue.)</small>	Used paper & cloth	5 · 19	3 · 17	7 · 21	5 · 19	2 · 16	6 · 20	4 · 18	1 · 15	6 · 20	10 · 24	7 · 21	7 · 21
			Bottles & cans, used batteries	12 · 26	10 · 24	14 · 28	12 · 26	9 · 23	13 · 27	11 · 25	8 · 22	13 · 27	17 · 31	14 · 28	14 · 28
			PET bottles	3	1	5	3	7	4	2	6	4	8	5	5
			Unburnable waste	17	15	19	17	21	18	16	20	4 · 18	22	19	19
Kita-iriso (1443-)	Every Mon./Thu. <small>Dec. 30 (Mon.) Last collection day of the year, closed on Jan. 2 (Thu.)</small>	Every Tuesday <small>Dec. 24 (Tue.) Last collection day of the year, closed on Dec. 31 (Tue.)</small>	Used paper & cloth	5 · 19	3 · 17	7 · 21	5 · 19	2 · 16	6 · 20	4 · 18	1 · 15	6 · 20	10 · 24	7 · 21	7 · 21
			Bottles & cans, used batteries	12 · 26	10 · 24	14 · 28	12 · 26	9 · 23	13 · 27	11 · 25	8 · 22	13 · 27	17 · 31	14 · 28	14 · 28
			PET bottles	3	1	5	3	7	4	2	6	4	8	5	5
			Unburnable waste	17	15	19	17	21	18	16	20	4 · 18	22	19	19
Minami-iriso (1021-)	Every Mon./Thu. <small>Dec. 30 (Mon.) Last collection day of the year, closed on Jan. 2 (Thu.)</small>	Every Tuesday <small>Dec. 24 (Tue.) Last collection day of the year, closed on Dec. 31 (Tue.)</small>	Used paper & cloth	5 · 19	3 · 17	7 · 21	5 · 19	2 · 16	6 · 20	4 · 18	1 · 15	6 · 20	10 · 24	7 · 21	7 · 21
			Bottles & cans, used batteries	12 · 26	10 · 24	14 · 28	12 · 26	9 · 23	13 · 27	11 · 25	8 · 22	13 · 27	17 · 31	14 · 28	14 · 28
			PET bottles	3	1	5	3	7	4	2	6	4	8	5	5
			Unburnable waste	17	15	19	17	21	18	16	20	4 · 18	22	19	19

Closed from 28th of Dec. (Sat.) to 5th of Jan. (Sun.).
There will be an extra collection of Burnable Waste on Dec. 30 (Mon.).

Dispose of heated tobacco products, electronic cigarettes, and portable battery chargers **on days for bottles, cans, and used batteries.**
Please dispose of small appliances with nonremovable batteries such as lithium-ion batteries in a small home appliance collection box.

In recent years, there has been an increased incidence of electronic cigarettes, portable battery chargers, and lithium-ion batteries such as appliance batteries catching fire at plastic recycling plants. Accordingly, for electronic cigarettes, portable battery chargers, and removable batteries from small appliances, please return to the manufacturer or dispose of on **days for bottles, cans, and used batteries** in a separate bag from bottles and cans.



Reference: The Japan Containers and Packaging Recycling Association (JCPRA)

Burnable waste **Tue./Fri.** area Cut out your area from the list and paste above.

* For the calendar version of the collection schedule, please search for "2024 Household Waste and Recycling Waste Collection Calendar Sayama City" on the internet and select the calendar from Sayama City's official website.
* Nonbusiness days are indicated in red.

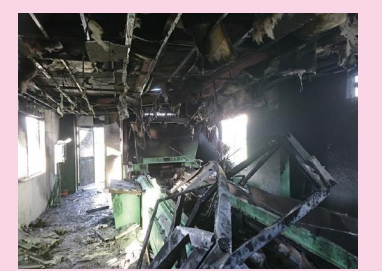
Area name	Burnable waste	Plastics	Category	April	May	June	July	August	September	October	November	December	January	February	March
Irumagawa 3-chome Sawa/Sayama/Unoki	Every Tue./Fri. <small>Dec. 31 (Tue.) Last collection day of the year; closed on Jan. 3 (Fri.)</small>	Every Monday <small>Dec. 23 (Mon.) Last collection day of the year; closed on Dec. 30 (Mon.)</small>	Used paper & cloth	4 · 18	2 · 16	6 · 20	4 · 18	1 · 15	5 · 19	3 · 17	7 · 21	5 · 19	9 · 23	6 · 20	6 · 20
			Bottles & cans, used batteries	11 · 25	9 · 23	13 · 27	11 · 25	8 · 22	12 · 26	10 · 24	14 · 28	12 · 26	16 · 30	13 · 27	13 · 27
			PET bottles	24	22	26	24	28	25	23	27	25	29	26	26
			Unburnable waste	10	8	12	10	14	11	9	13	11 · 25	15	12	12
Higashimitsugi	Every Tue./Fri. <small>Dec. 31 (Tue.) Last collection day of the year; closed on Jan. 3 (Fri.)</small>	Every Thursday <small>Dec. 26 (Thu.) Last collection day of the year; closed on Jan. 2 (Thu.)</small>	Used paper & cloth	1 · 15	6 · 20	3 · 17	1 · 15	5 · 19	2 · 16	7 · 21	4 · 18	2 · 16	6 · 20	3 · 17	3 · 17
			Bottles & cans, used batteries	8 · 22	13 · 27	10 · 24	8 · 22	12 · 26	9 · 23	14 · 28	11 · 25	9 · 23	13 · 27	10 · 24	10 · 24
			PET bottles	24	22	26	24	28	25	23	27	25	29	26	26
			Unburnable waste	10	8	12	10	14	11	9	13	11 · 25	15	12	12
Kashiwabara	Every Tue./Fri. <small>Dec. 31 (Tue.) Last collection day of the year; closed on Jan. 3 (Fri.)</small>	Every Monday <small>Dec. 23 (Mon.) Last collection day of the year; closed on Dec. 30 (Mon.)</small>	Used paper & cloth	4 · 18	2 · 16	6 · 20	4 · 18	1 · 15	5 · 19	3 · 17	7 · 21	5 · 19	9 · 23	6 · 20	6 · 20
			Bottles & cans, used batteries	3 · 17	1 · 15	5 · 19	3 · 17	7 · 21	4 · 18	2 · 16	6 · 20	4 · 18	8 · 22	5 · 19	5 · 19
			PET bottles	24	22	26	24	28	25	23	27	25	29	26	26
			Unburnable waste	10	8	12	10	14	11	9	13	11 · 25	15	12	12
Shinsayama 1,2-chome Aoyagi/Nakashinden	Every Tue./Fri. <small>Dec. 31 (Tue.) Last collection day of the year; closed on Jan. 3 (Fri.)</small>	Every Monday <small>Dec. 23 (Mon.) Last collection day of the year; closed on Dec. 30 (Mon.)</small>	Used paper & cloth	11 · 25	9 · 23	13 · 27	11 · 25	8 · 22	12 · 26	10 · 24	14 · 28	12 · 26	16 · 30	13 · 27	13 · 27
			Bottles & cans, used batteries	4 · 18	2 · 16	6 · 20	4 · 18	1 · 15	5 · 19	3 · 17	7 · 21	5 · 19	9 · 23	6 · 20	6 · 20
			PET bottles	24	22	26	24	28	25	23	27	25	29	26	26
			Unburnable waste	10	8	12	10	14	11	9	13	11 · 25	15	12	12
Shinsayama 3-chome	Every Tue./Fri. <small>Dec. 31 (Tue.) Last collection day of the year; closed on Jan. 3 (Fri.)</small>	Every Monday <small>Dec. 23 (Mon.) Last collection day of the year; closed on Dec. 30 (Mon.)</small>	Used paper & cloth	4 · 18	2 · 16	6 · 20	4 · 18	1 · 15	5 · 19	3 · 17	7 · 21	5 · 19	9 · 23	6 · 20	6 · 20
			Bottles & cans, used batteries	11 · 25	9 · 23	13 · 27	11 · 25	8 · 22	12 · 26	10 · 24	14 · 28	12 · 26	16 · 30	13 · 27	13 · 27
			PET bottles	24	22	26	24	28	25	23	27	25	29	26	26
			Unburnable waste	10	8	12	10	14	11	9	13	11 · 25	15	12	12
Tsutsujino Sasai/Negishi	Every Tue./Fri. <small>Dec. 31 (Tue.) Last collection day of the year; closed on Jan. 3 (Fri.)</small>	Every Thursday <small>Dec. 26 (Thu.) Last collection day of the year; closed on Jan. 2 (Thu.)</small>	Used paper & cloth	8 · 22	13 · 27	10 · 24	8 · 22	12 · 26	9 · 23	14 · 28	11 · 25	9 · 23	13 · 27	10 · 24	10 · 24
			Bottles & cans, used batteries	1 · 15	6 · 20	3 · 17	1 · 15	5 · 19	2 · 16	7 · 21	4 · 18	2 · 16	6 · 20	3 · 17	3 · 17
			PET bottles	10	8	12	10	14	11	9	13	11	15	12	12
			Unburnable waste	24	22	26	24	28	25	23	27	11 · 25	29	26	26
Hirose/Kamihirose Shimohirose/Hirosedai/ Hirosehigashi	Every Tue./Fri. <small>Dec. 31 (Tue.) Last collection day of the year; closed on Jan. 3 (Fri.)</small>	Every Thursday <small>Dec. 26 (Thu.) Last collection day of the year; closed on Jan. 2 (Thu.)</small>	Used paper & cloth	8 · 22	13 · 27	10 · 24	8 · 22	12 · 26	9 · 23	14 · 28	11 · 25	9 · 23	13 · 27	10 · 24	10 · 24
			Bottles & cans, used batteries	1 · 15	6 · 20	3 · 17	1 · 15	5 · 19	2 · 16	7 · 21	4 · 18	2 · 16	6 · 20	3 · 17	3 · 17
			PET bottles	10	8	12	10	14	11	9	13	11	15	12	12
			Unburnable waste	24	22	26	24	28	25	23	27	11 · 25	29	26	26
Kamiokutomi/ Shimookutomi Kashiwabarashinden	Every Tue./Fri. <small>Dec. 31 (Tue.) Last collection day of the year; closed on Jan. 3 (Fri.)</small>	Every Thursday <small>Dec. 26 (Thu.) Last collection day of the year; closed on Jan. 2 (Thu.)</small>	Used paper & cloth	8 · 22	13 · 27	10 · 24	8 · 22	12 · 26	9 · 23	14 · 28	11 · 25	9 · 23	13 · 27	10 · 24	10 · 24
			Bottles & cans, used batteries	3 · 17	1 · 15	5 · 19	3 · 17	7 · 21	4 · 18	2 · 16	6 · 20	4 · 18	8 · 22	5 · 19	5 · 19
			PET bottles	10	8	12	10	14	11	9	13	11	15	12	12
			Unburnable waste	24	22	26	24	28	25	23	27	11 · 25	29	26	26
Sayamadai 1, 2-chome	Every Tue./Fri. <small>Dec. 31 (Tue.) Last collection day of the year; closed on Jan. 3 (Fri.)</small>	Every Thursday <small>Dec. 26 (Thu.) Last collection day of the year; closed on Jan. 2 (Thu.)</small>	Used paper & cloth	1 · 15	6 · 20	3 · 17	1 · 15	5 · 19	2 · 16	7 · 21	4 · 18	2 · 16	6 · 20	3 · 17	3 · 17
			Bottles & cans, used batteries	8 · 22	13 · 27	10 · 24	8 · 22	12 · 26	9 · 23	14 · 28	11 · 25	9 · 23	13 · 27	10 · 24	10 · 24
			PET bottles	10	8	12	10	14	11	9	13	11	15	12	12
			Unburnable waste	24	22	26	24	28	25	23	27	11 · 25	29	26	26
Horigane/Kamiakasaka Kazashi	Every Tue./Fri. <small>Dec. 31 (Tue.) Last collection day of the year; closed on Jan. 3 (Fri.)</small>	Every Monday <small>Dec. 23 (Mon.) Last collection day of the year; closed on Dec. 30 (Mon.)</small>	Used paper & cloth	11 · 25	9 · 23	13 · 27	11 · 25	8 · 22	12 · 26	10 · 24	14 · 28	12 · 26	16 · 30	13 · 27	13 · 27
			Bottles & cans, used batteries	4 · 18	2 · 16	6 · 20	4 · 18	1 · 15	5 · 19	3 · 17	7 · 21	5 · 19	9 · 23	6 · 20	6 · 20
			PET bottles	10	8	12	10	14	11	9	13	11	15	12	12
			Unburnable waste	24	22	26	24	28	25	23	27	11 · 25	29	26	26

Closed from 28th of Dec. (Sat.) to 5th of Jan. (Sun.).
There will be an extra collection of Burnable Waste on Dec. 31 (Tue.).

Dispose of heated tobacco products, electronic cigarettes, and portable battery chargers on days for bottles, cans, and used batteries.

Please dispose of small appliances with nonremovable batteries such as lithium-ion batteries in a small home appliance collection box.

In recent years, there has been an increased incidence of electronic cigarettes, portable battery chargers, and lithium-ion batteries such as appliance batteries catching fire at plastic recycling plants. Accordingly, for electronic cigarettes, portable battery chargers, and removable batteries from small appliances, please return to the manufacturer or dispose of on **days for bottles, cans, and used batteries** in a separate bag from bottles and cans.



Reference: The Japan Containers and Packaging Recycling Association (JCPRA)